



# ST MICHAEL'S MAIL

Nursery Newsletter

14th November 2021

## **Hello from the nursery team:**

**Hilary, Jennie, Charlotte, Elaine, Gemma, Georgie, Hollie, Lizzie, Louise & Sophie**

Dear parents and carers,

Thank you to those that were able to attend the AGM last week. We have a new Chairperson, Miranda Masters (George's mum); New Vice Chair, Verity Herring (Luca's mum); and a new Communications manager Francesca Bellamy (Margot's mum). Kate, Sal and Izzy were all re-elected for their existing positions. Please do thank these ladies for taking on these essential roles, and for our other committee parents for their continued support.

The children who attend nursery on a Thursday went along to the Village War Memorial last week. We had made a poppy and placed it by the memorial to 'remember the soldiers who help to keep us safe'. The children were amazing, managing 2 minutes of silence, helped by each other with the occasional shush. We also enjoyed the walk in the rustling leaves and this week will be repeating a 'community walk', making leaf crowns with leaves we collect on our way. We will be thinking about hibernating animals and other animals that may need our help as the weather gets colder.

At nursery this week we will start to learn songs for our nativity play. This year we are using the story 'Humph The Camel'. We would appreciate parents emphasising the PH sound ('F') and am sure reading this will bring the same smile to your face as it does to ours!

The nativity will take place on the last day of term, Friday 17th December. It usually starts at about 11.30 and lasts not much more than half an hour, however, final details will follow nearer the time. We may limit attendance to two adults per child and we would appreciate knowing if you are planning on being away that day. Children who do not normally attend on a Friday are invited to attend for shorter hours on that day in order to participate.

But first, we have our Christmas fair! This week it's time to:-

- Clear out old toys, games and fancy dress outfits to make way for new Christmas gifts. Bring any good quality items to nursery for the toy stall.
- Bring in your filled lucky dip bags, plus any chocolate or wine items.
- Please don't forget to sign up to be a stall helper and there are a few Father Christmas slots available.

Finally, we have had an increasing number of unnamed items to relocate with their owners, please remember to name your children's clothing, especially waterproofs, coats, hats and footwear, biro is fine, providing you re-write after a wash. Thank you.

Hilary

---

### Diary Dates:

*Wednesday 1st December (timings tbc): Nursery Christmas Fair prep night*

*Saturday 4th December, 11am to 2pm: Nursery Christmas Fair - see checklist!*

*Friday 17th December: Christmas play and end of term*

# THIS WEEK...

## Communication, Language & Literacy:

Provide interactive books with flaps, buttons, sounds for your child to engage in, and ignite an interest in books. Your local library is a good place to start...or you could start that Christmas list!

Get your child involved in creating birthday, Christmas or thank you cards. The perfect opportunity to draw, colour and mark-make - they might even like to have a go at signing their name.

## Woodland Wonder

Enjoy an Autumnal walk and scavenger hunt. See how many natural autumnal items you can find. Explore them and see how they look, feel, and smell. But remember not to pick anything from plants or trees, and always leave the woods like you were never there.

Here's an example list which you can print, or why not make your own: <https://www.bakerross.co.uk/craft-ideas/kids/autumn-scavenger-hunt/>

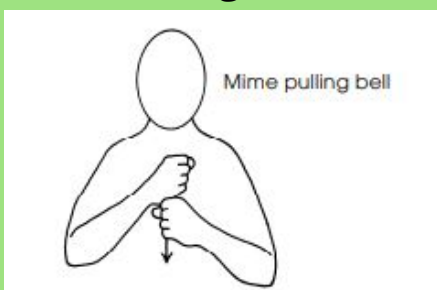
What other treasures can you find?



## Makaton

At nursery each week we introduce a Makaton sign and symbol. Makaton supports spoken language and helps children communicate their needs.

**This week's sign is 'Church':**



Sound of the week:

**h**

Number of the week:

**10**

Click on [this link](#) for a video demonstrating how to pronounce the phonic sounds

**h is for holly:**

Holly is one of our evergreen tree species, it's berries provide a valuable winter food source, and it's leaves shelter, for many birds. Holly has traditionally been used for garlands and wreaths at Christmas. Watch out for those spiky leaves if you decide to have a go!

## Star of the Day

Please take a photo or short video of something special that your child would like to share with us at nursery and upload it to Tapestry.

**NB. please record videos in LANDSCAPE format (i.e. with phone/tablet held horizontally) so we are able to view them on the large screen.**



**Monday 15th: Leo D**

**Tuesday 16th: Eva**

**Wednesday 17th: Ted**

**Thursday 18th: Dougie**

**Friday 19th: Robyn**

