



# ST. MICHAEL'S MAIL

St. Michael's Nursery Newsletter

29th June 2025

**Hello from the nursery team:**

**Hilary, Jennie, Aimee, Eva, Faith, Hannah, Justyn, Katie,  
Kelly, Lizzie, Louise and Sophie**

Dear parents and carers,

Another hot one this week, so more water play to help us all keep cool. Please continue to send in spare clothing so we can change at the end of play. You may also send your child in bathing costumes, but please remember to apply sun cream to exposed skin.

Some children love to wear our spare hats, some do not, and we have had a case of headlice, hence sending in named sun hats is also recommended!

Wednesday 2nd July is schools move-up day. Please help us to minimise disruption by trying to stick to our usual door opening times. If your child has an afternoon visit, please collect them before lunch at 12.15. It is important that you let the nursery know if you are changing your normal attendance pattern on Wednesday.

School leavers transition chats are on Wednesday 2nd and Thursday 3rd in the evening.

Our Gingerbread Man show is THIS Friday, 4<sup>th</sup> July. As previously mentioned in the newsletter, all children are invited to attend. Those who do not usually attend on a Friday should arrive in costume and toileted at 11.15. The play will start at about 11.30 and takes about half an hour. We hope to perform outside, and will need parent helpers to set up chairs please. All younger children (those not starting reception in September 2025) are chorus line and will need to wear plain clothing to depict sky, so blue or white please. Older children have been assigned roles and we have costumes for them to wear. Please do let us know if your child will not be attending to allow us to plan accordingly. Grandparents are welcome to attend too.

School leavers sports day is on Thursday, 10th July. This should take place in the afternoon and start at 2pm. IF the weather is forecast to be hot, it will take place in the morning when it is cooler. I am sorry but we can't confirm until a couple of days before at the earliest.

Please note several parents have informed us that they have found ticks on their children. Please ensure you check your child daily.

Hilary

## **Diary Dates:**

Weds 2<sup>nd</sup>/Thurs 3<sup>rd</sup> July, evening appointments: Leavers' parents evenings

Fri 4<sup>th</sup> July, from 11.15am: Summer Play: The Gingerbread Man

Thurs 10<sup>th</sup> July, 2pm: Older children's Sports Day

Weds 16<sup>th</sup> July, morning: Younger children's Sports Day + Last Day of Term (younger children)

Thurs 17<sup>th</sup> July: Leavers Party + Last Day of Term (older children)

# THIS WEEK...

## Mathematics (and much more!):

Creative construction!

Play and experimentation with a variety of construction toys, of all shapes and sizes, and that connect in a variety of ways supports your child's mathematical development - by learning to select, combine and use shapes for a specific purpose, to fit a specific space or create new shapes and recognise patterns. But they will also be developing their manipulative, control and problem-solving skills, encountering challenge and being creative. Time to get the Lego out?

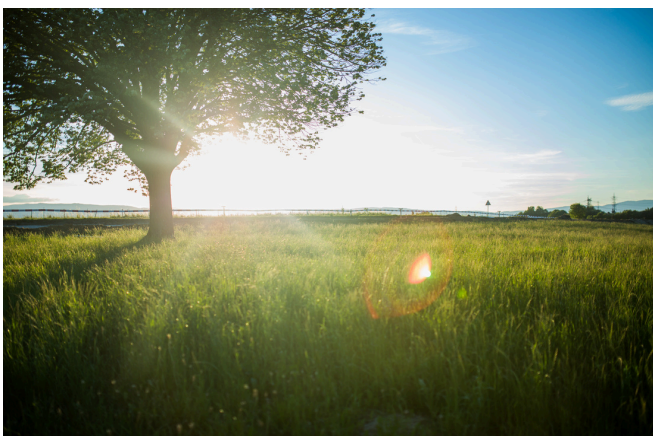


## Number of the week:



## Woodland Wonder:

We are so fortunate to live in such a beautiful area and with the long summer holiday in mind, here are some ideas for enjoying the wildlife right on our doorstep. Whether you fancy wildflower spotting, bug hunting, woodland walks or even reptile hunting...there are plenty of ideas on the [Surrey Wildlife Trust](http://www.surreywildlifetrust.org.uk) website.



## Star of the Day

Please upload to Tapestry a photo or short video of something special that your child would like to share with us at nursery. Two or three photos/videos is plenty!

**NB. please record videos in LANDSCAPE format (i.e. with phone/tablet held horizontally) so we are able to view them on the large screen.**

**Monday 30th: Nora**

**Tuesday 1st: Mimi**

**Wednesday 2nd: Stefa**

**Thursday 3rd: No star**

**Friday 4th: Albert**

Our star of the day schedule is also displayed in the nursery window for future dates